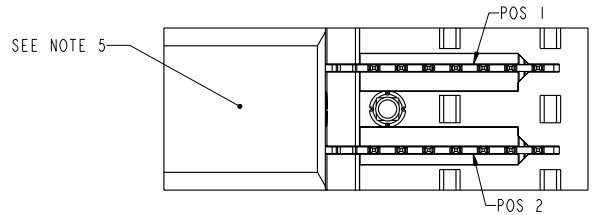
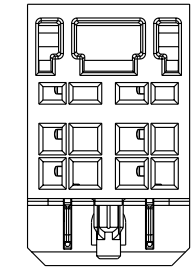
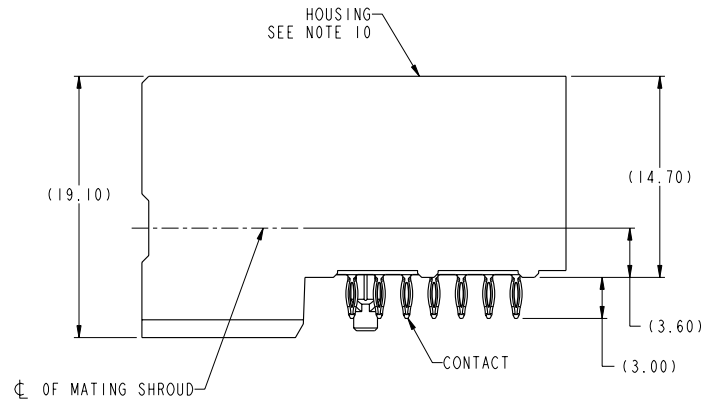
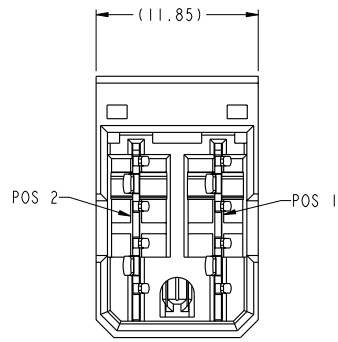
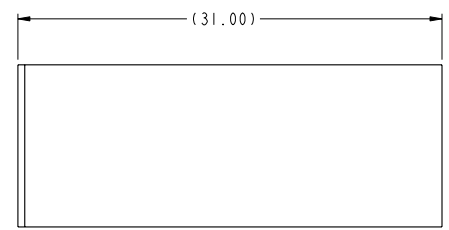
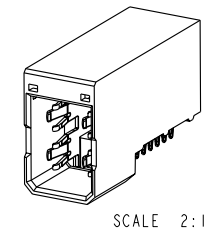


A	PRODUCT NUMBER (SEE NOTE 2)	CONTACT PLATING		ROHS COMPATIBILITY
		SEPARABLE INTERFACE	PRESS-FIT TAIL	
	10028918-001	0.76um MIN GOLD OVER NICKEL	0.5um MIN TIN-LEAD OVER NICKEL	
10028918-001LF	0.5um MIN MATTE TIN OVER NICKEL		SEE NOTE 8	



Copyright FCJ

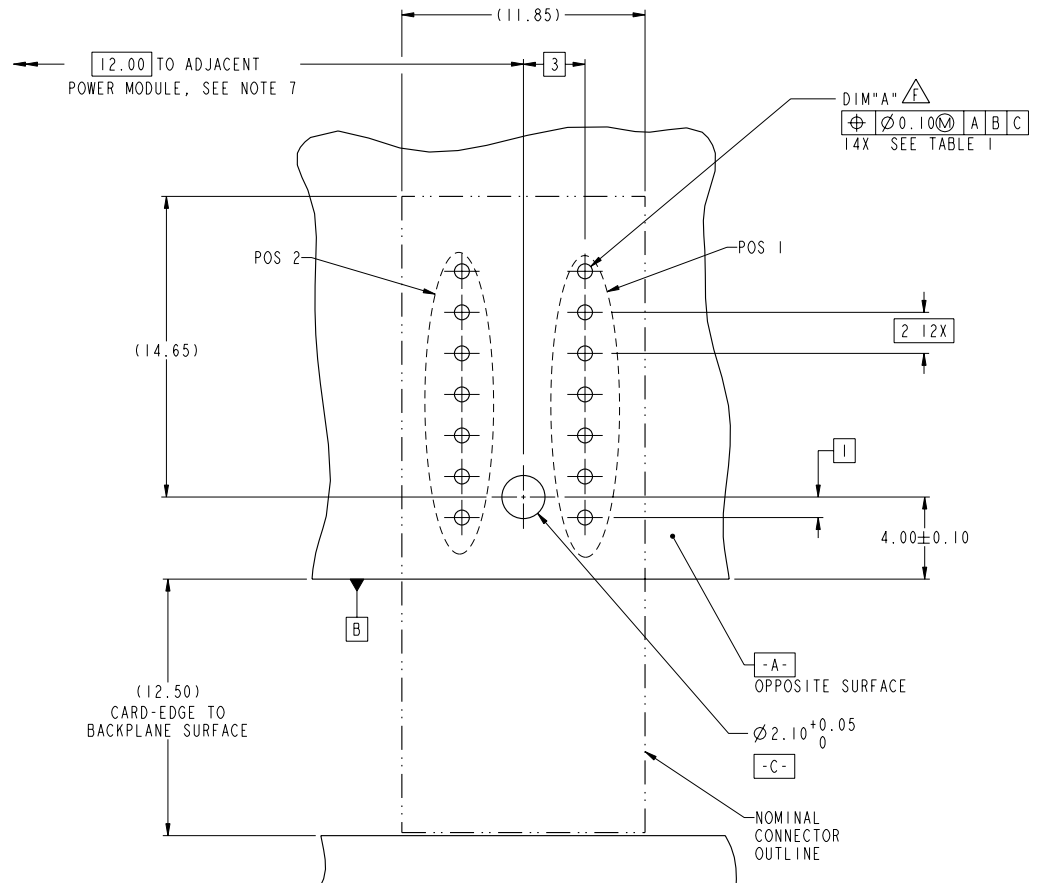
www.fciconnect.com		surface ASME Y14.5	tolerance std ASME Y14.5	projection	MM
		TOLERANCES UNLESS OTHERWISE SPECIFIED		size	Scale
Dr	W. J. SWAIN	2003-08-07	ANGULAR	0.X ±.3	A2 1:1
Eng	ANDREW YONG	2010-05-11	LINEAR	0.xx ±.10	ECN S10-0086
Chr	C. H. TAN	2010-05-11	0° ±2°	0.xxx ±.050	Spec ref GS-12-220
Appr	JOEY NG	2010-05-11	Product family	2mm High Power	
rev	ecn no	dr	date	FCJ	HEADER ASSEMBLY, 1X2,
A	V04-0691	WJS	2004-07-07	POWER	10028918
B	V05-0150	WJS	2005-02-10		Rev. F
C	S05-0301	WJS	2005-10-24		
D	S06-0412	LS	2006-12-21		
E	S08-0287	YK	2008-09-02		
F	S10-0086	AY	2010-05-11		
				catalog no	CUSTOMER
				sheet 1 of 2	

TABLE I
PLATED THROUGH-HOLE REQUIREMENTS

TOP LAYER DESCRIPTION	DRILLED HOLE DIAMETER	COPPER THICKNESS	TIN-LEAD THICKNESS	NICKEL THICKNESS	GOLD THICKNESS	TIN THICKNESS	SILVER THICKNESS	FINISHED HOLE DIAMETER (DIM"A") ^F
TIN-LEAD	0.81-0.86 (0.85 DRILL)	0.025 - 0.050	0.005 - 0.015	--	--	--	--	0.65 - 0.80
IMMERSION TIN	0.81-0.86 (0.85 DRILL)	0.025 - 0.050	--	--	--	0.9 - 1.5um	--	0.70 - 0.80
IMMERSION SILVER	0.81-0.86 (0.85 DRILL)	0.025 - 0.050	--	--	--	--	0.15 - 0.65um	0.70 - 0.80
COPPER (SEE NOTE 11)	0.81-0.86 (0.85 DRILL)	0.025 - 0.050	--	--	--	--	--	0.70 - 0.80
GOLD	0.81-0.86 (0.85 DRILL)	0.025 - 0.050	--	0.003 - 0.007	FLASH UP TO 0.0002	--	--	0.69 - 0.80

NOTES:

1. CONNECTOR MATERIALS:
HOUSING: HIGH TEMPERATURE THERMOPLASTIC, BLACK
UL 94V-0 COMPLIANT
CONTACT: HIGH PERFORMANCE COPPER ALLOY
2. "LF" SUFFIX DENOTES "LEAD-FREE"
3. PRODUCT SPECIFICATION: GS-12-220
4. APPLICATION SPECIFICATION: GS-20-023
5. PRODUCT MARKING (PRODUCT NUMBER & LOT CODE) ON HOUSING.
6. MINIMUM NOMINAL PCB THICKNESS: 1.6mm
7. REFER TO CUSTOMER DRAWING SK10035911 FOR INFORMATION REGARDING PCB LAYOUT OF POWER AND GUIDE MODULES RELATIVE TO SIGNAL MODULES.
8. PRODUCT MEETS EUROPEAN UNION DIRECTIVES AND OTHER COUNTRY REGULATIONS AS DESCRIBED IN FCI SPECIFICATION GS-22-008.
9. PACKAGING MEETS FCI SPECIFICATION GS-14-920.
10. HOUSING COMPONENT WILL WITHSTAND EXPOSURE TO 260°C PEAK TEMPERATURE FOR 60 SECONDS IN A CONVECTION, INFRA-RED, OR VAPOR PHASE REFLOW OVEN.
11. COPPER PLATING THICKNESS IN CENTER OF VIA HOLE CAN BE NO MORE THAN 0.003 LESS THAN OTHER AREAS.
12. A ^F SYMBOL WILL BE NEXT TO ANY DIMENSION, VIEW, OR NOTE WHICH HAS BEEN MODIFIED WITH THE CURRENT DRAWING REVISION



RECOMMENDED PCB LAYOUT,
COMPONENT SIDE
SEE NOTE 6
SCALE 6:1

FCI	HEADER ASSEMBLY, 1X2,	dag no	10028918	Rev.	F
	POWER	CUSTOMER	sheet 2 of 2		