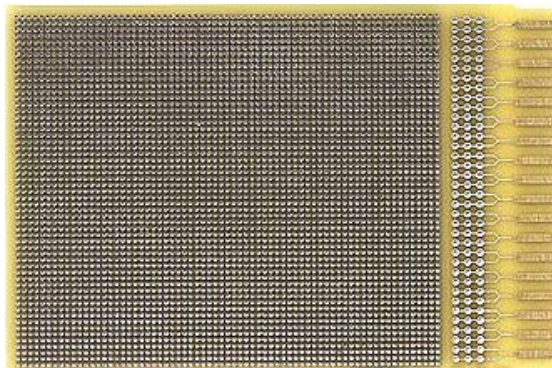




# TWIN INDUSTRIES

Extender Cards – Prototyping Boards – Development Tools

Twin Industries Part# 7036-50



## Description:

General Purpose Prototyping Board

Grid of 0.05" x 0.05" Plated Holes (27mils diameter)

2/18 Gold Edge Connector (0.156" pitch)

General Prototyping Dimensions = 2.8" x 3.5"

Overall Dimensions = 3.5" x 4.0"